



EMPOWERING HOUSEHOLDS & BEYOND

2022 IMPACT REPORT





TABLE OF CONTENTS

4 2022 In Review

6 Vision & Mission

6-7 Who & Where

8 Meet the Team

10-11 Enrolment

13 Goals and Initiatives

14 Creative Learning Curriculum

16-17 Zakhona's Story

18-21 2022 Measurable Impact

23 Partner With Us

2022 IN REVIEW



What an incredible year! We officially resumed centre-based activities, helping us calibrate into a new normal. Also, because we maintained many of the holistic household interventions developed during Covid, it was a year of GROWTH! We worked with 1162 children in our Early Learning and Education Initiatives, empowered their households to improve parenting and learning at home, and enabled more than 380 of these households to grow their own food. We also supported over 430 local small-scale farmers. Collectively, our farming interventions harvested vegetables to the value of R5.2 million during 2022!

Thanda was established in 2008 to provide critically needed support for vulnerable children through after-school programmes.

We enabled more than 380 households to grow their own food!

Over our 15 years of operation, we have evolved to provide increasingly holistic support for households in rural communities throughout the Umzumbe Municipality in the Ugu District of KwaZulu-Natal. Today, our holistic programmes cater to everyone in the household – from babies to elderly grandparents.

Covid led us in this direction by necessitating a hard shift from working on-site through centre-based or school-based programmes to working directly with households. This model has unexpectedly made great strides! Supporting households has improved learning and development for children whilst strengthening bonds between children and their guardians. We are proud to have played a role in transforming families' attitudes towards self-reliance farming, supporting children's emotional needs, and taking ownership of their children's development and education.



Learning at Home packs are still distributed every two months so that learning can continue at home. We have seen a systemic shift in how guardians view education, and they are empowered to play a role in their children's learning and development.



VISION & MISSION

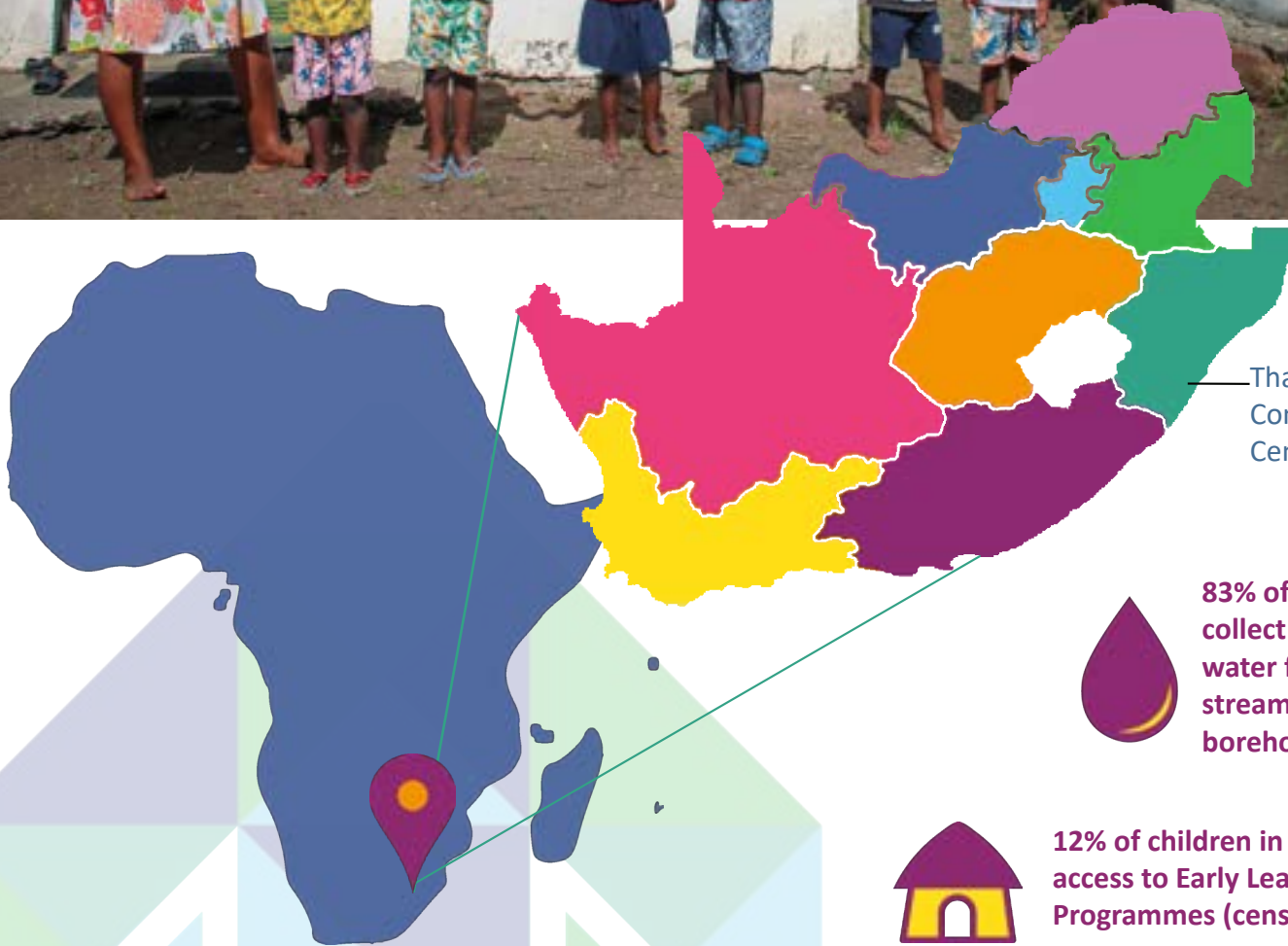
VISION

Thanda envisions a thriving rural population that supports the holistic development of children, their households, and communities as a whole.

MISSION

Thanda provides a holistic response to the critical needs of children in rural Mtwalume through high-quality early learning, parenting, and social-emotional learning programmes, as well as organic farming interventions to enable food security within households.





Thanda Community Centre



Annual household income is R14 600 per annum



Only 9% of the community is employed



83% of households collect their water from streams, springs or boreholes



The average number of household members is 5



12% of children in KZN have access to Early Learning Programmes (census 2011)



Wards 1, 5, 9, 12, 13, 14 and 16 in the Umzumbe Municipality in over 63 Neighbourhoods.

MEET

THE

TEAM

All of Thanda's project staff is hired locally – most are between the ages of 18 - 35 and 100% of our Programme Management staff are Black African. Our solar-powered Community Centre, which is the central hub of our operations, is open 365 days a year, home to six Early Learning classrooms, a facilitator resource centre, an Agri-hub and the municipality's only library, art centre, and skatepark. We harvest our own water and rely on our biodigester to help power stoves for our Feeding Programme.





Our locally hired Programme Management team run all of Thanda's programmes, lead a team of 150 staff and volunteers, and work directly with the community and beneficiaries.

ENROLMENT

At Thanda, we have four initiatives and each has multiple programmes with varying enrollment and community reach. Altogether, our initiatives reach over 2,222 DIRECT beneficiaries engaging with interventions at least once per week.



EARLY LEARNING

Imbewu ECD
(GR. 000-00)

112
CHILDREN

Satellite ECDs
(GR. 000-00)

49
CHILDREN

Fun Foundations
(GR. 000-00)

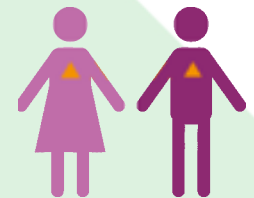
116
CHILDREN

Inclusion Programme
(Ages 0-14)

19
CHILDREN

Baby Programme
(Ages 0-2)

60
BABIES



Home Visiting

365 HOUSEHOLDS



Learning At Home

6 164 PACKS

EDUCATION

Thandukwazi
(GR. R-3)

373
CHILDREN

Siyazazi
(GR. 4-7)

429
CHILDREN

Umthombo
(ALL AGES)

37
CHILDREN

Literacy Programme
(GR. R-3)

373
CHILDREN

Boys Programme
(GR. 4-7)

100
BOYS

Girls Programme
(GR. 4-7)

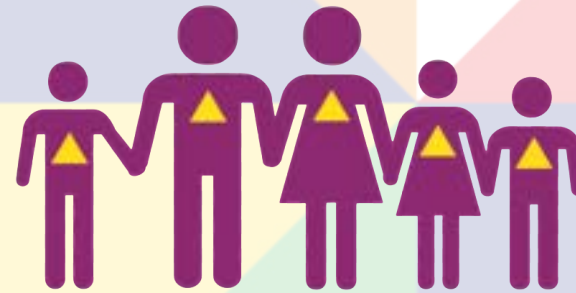
120
GIRLS

Amaqhawekazi
(GR. 4-7)

68
GIRLS

COMMUNITY

43 000
COMMUNITY
MEMBERS



ORGANIC FARMING

Nisela Organic Farming

430
FARMERS

Household Gardening

365
HOUSEHOLDS





GOALS & INITIATIVES

Our Education programmes involve after-school and enrichment programmes for children in Grades R to 7. These programmes are designed to break children out of a “failure to thrive” mentality and empower girls and boys with skills that are necessary for becoming resilient, lifelong learners who demonstrate empathy and respect; have positive self-esteem; and take responsibility for how their actions impact the environment and others.

Education Initiative

Our ECD programmes provide quality Early Learning opportunities for children who would otherwise not have access to Early Learning— giving them everything they need for a positive start in life. We use Early Childhood best practices by keeping learning alive, adaptable, relatable and most importantly... fun! Our proprietary curriculum includes minute-by-minute lesson plans that guide teachers to offer a high-quality learning experience. Lessons also include critical skills such as confidence, empathy, imagination, and creativity.

Early Learning Initiative

At Thanda, we recognise that our interventions do not operate in a vacuum, but instead require an enabling environment where certain factors are easily accessible. Our Community Initiative includes water access and maintenance projects, community-wide tippy taps, public access to Thanda’s Library, and Arts and Crafts for Gogos (elderly). Collectively, these community services extend support to all individuals and families living in neighbourhoods where our programmes operate.

Community Initiative

Our Organic Farming programmes aim to sustainably improve household nutrition, strengthen self-reliance, and build a local economy by providing mentoring, access to inputs and implementing Climate-Resilient Infrastructure and farmer resilience models.

Organic Farming Initiative

This initiative empowers women, youth, and elderly to grow food at home or earn an income through farming and is fundamental to our holistic approach; many of our farmers’ children are supported through our Early Learning and

CREATIVE

LEARNING

CURRICULUM

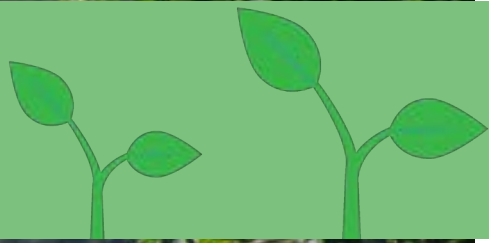


Thanda’s specially developed Creative Learning methodology underpins all of our curricula – and our staff training, too! We guide our staff through a journey of self-development so they can be exposed to many of the skills-building and healing processes they then lead children and farmers through. The core of all our curricula is based on the Circle of Courage, a Native American medicine wheel concept which identifies four universal needs for growth, development, and ultimately balance: belonging, mastery, independence, and generosity. The themes taught in our story-based lessons are centred around developing skills which promote socio-cognitive concepts like empathy, creativity, and problem-solving. Through experiences that enable mastery and independence within a safe and structured environment, our approach equips vulnerable children and adults with a toolbox of developmental and emotional skills they can use to rise above life’s challenges.



“WE CANNOT EXPECT OUR STAFF TO TEACH OUR BENEFICIARIES CONCEPTS WHICH THEY THEMSELVES HAVE NOT BEEN EXPOSED TO, SO WE INVEST IN ONGOING STAFF TRAINING AND DEVELOPMENT WITH ALL TEAM MEMBERS.”

—Tyler Howard, Co-Founder and Programme Director



ZAKHONA'S STORY



As illustrated by our new model on the right, each farmer has a unique goal. By enabling farmers to identify their individual objectives – from modest subsistence seekers to high-achieving entrepreneurs – we can better tailor mentorship and support to help them achieve their self-defined success.

Zakhona Khomo falls into the subsistence category; her primary goal is to feed her family, while her secondary goal is to sell excess organic produce and earn a bit of income when possible.

“I got into farming because of hunger... only hunger. There would be times of the month where we would not have anything to eat but now I can just go into my garden and get something to eat for myself and my family. I am not in need anymore, I can just fetch food from my garden, it is fresh from the soil and healthy even!

We have strength to carry buckets and not fall because we are healthy eating nutritiously.”

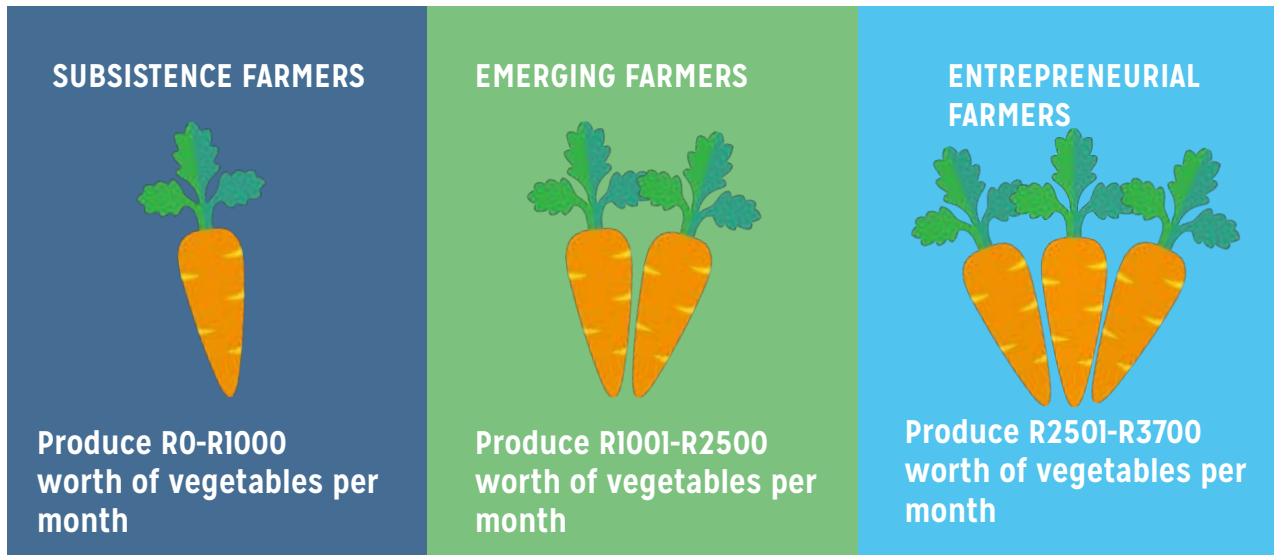
“I got into farming because of hunger... only hunger.”

Zakhona attributes her farming success to hard work and the support of her mentor. She says, *“The mentors are a great help they do not leave us to figure things out for ourselves, they guide us.”*

Mentors impart a vast array of valuable insight during their one-on-one visits with the farmers. Mentors provide technical advice: *“An important lesson I have taken this year is to use kraal compost. I never used to do that and, on the advice of my mentor, I plant with the kraal manure underneath the plant and also sprinkle it on your seedlings.”* ... and

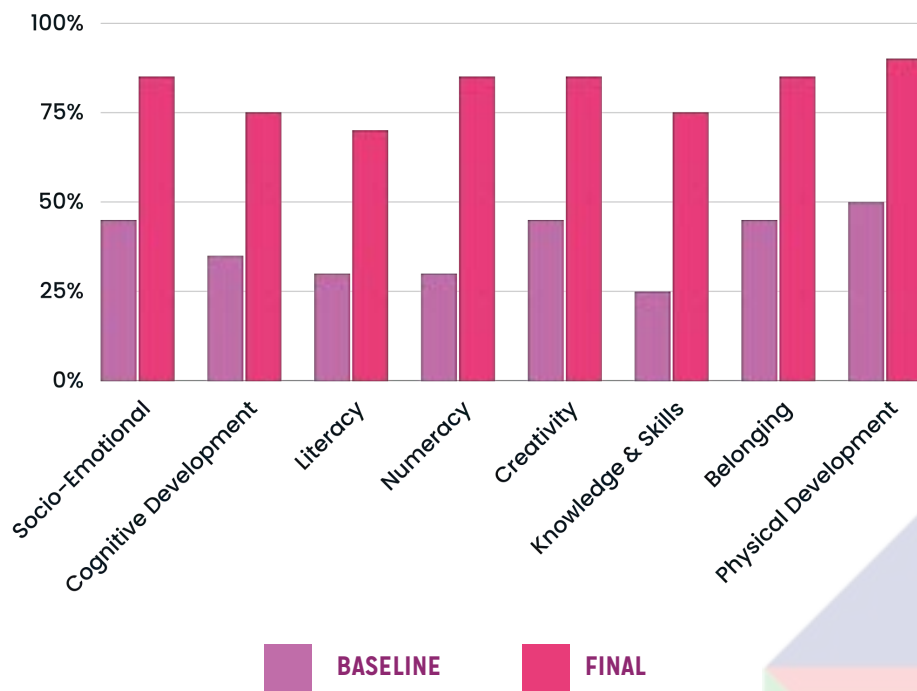
nutrition advice: *“In my garden I usually plant onions and spinach. You see all the way to the top I have planted spinach. I have planted it because it has a lot of health benefits.”*

Finally, Zakhona shares, *“Farming is so valuable for this community, not only to put food in our families’ bellies but we also receive an income when we produce extra vegetables. Thanda helps us by taking it to the market to be sold. It is so great to be able to see some money after having worked hard on the plot.”*

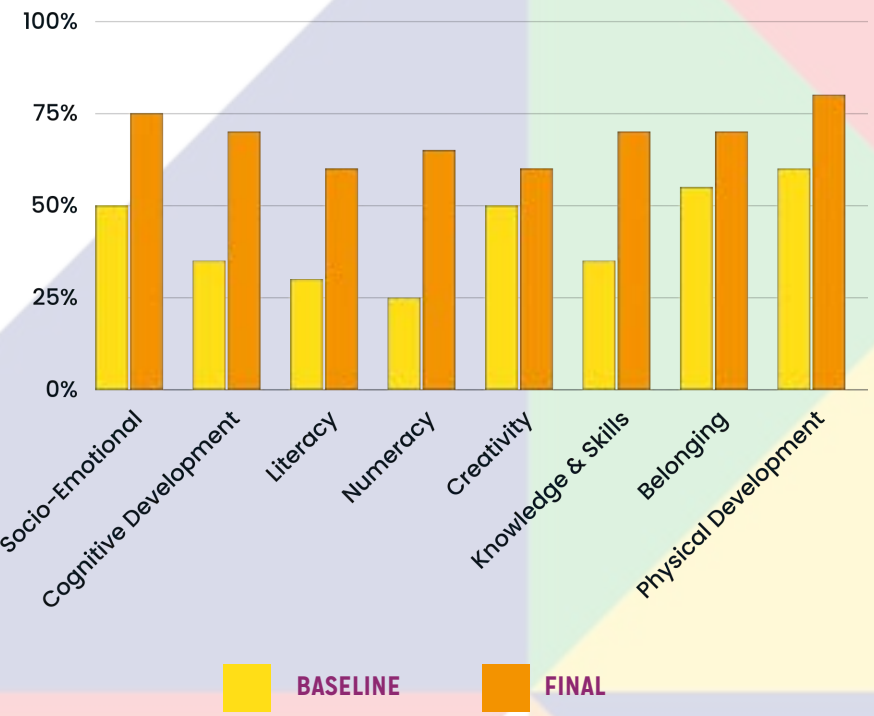


2022 MEASURABLE IMPACT

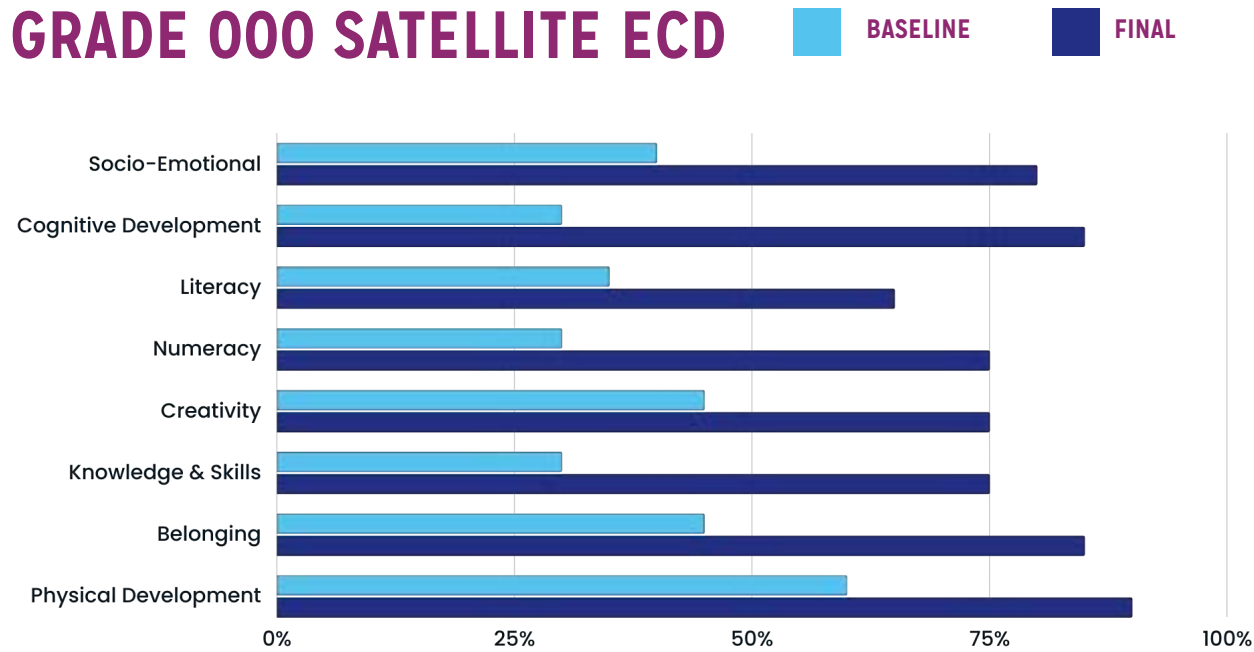
GRADE 000 IMBEWU ECD



GRADE 000 FUN FOUNDATIONS



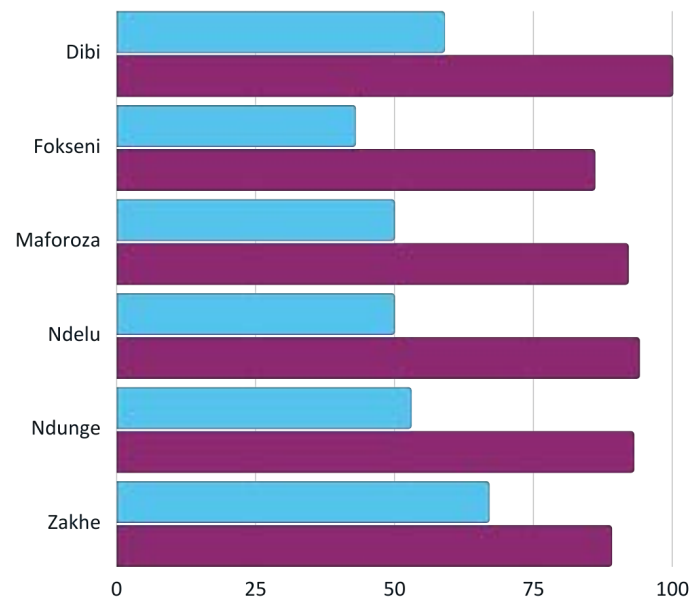
GRADE 000 SATELLITE ECD



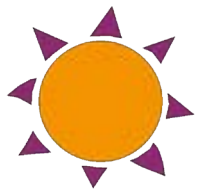
ENSURING BABIES ARE LEARNING & DEVELOPING

At baseline assessment of **42** guardians in our baby programme, only **22 out of the 42** guardians thought that children learn from birth.

At final assessment point, **40 out of the 42** guardians said babies start learning from birth!



Graph measures ability to meet developmental milestone for exploration (sensory, construction, music), according to various neighbourhoods



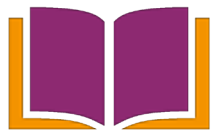
AFTER-SCHOOL EDUCATION IN NEIGHBOURHOODS

The Thandukwazi Programme had an average attendance rate of **84%**



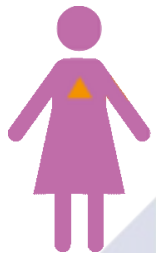
FEEDING CHILDREN

58711 bowls of porridge and **85053** hot cooked meals served



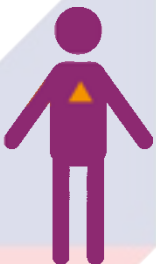
BUILDING A LOVE OF READING

12414 books borrowed through our mobile library



EMPOWERING GIRLS

In Amaqhawekazi, the girls' ability to Problem Solve has improved **80%** and their sense of Agency has improved **85%**



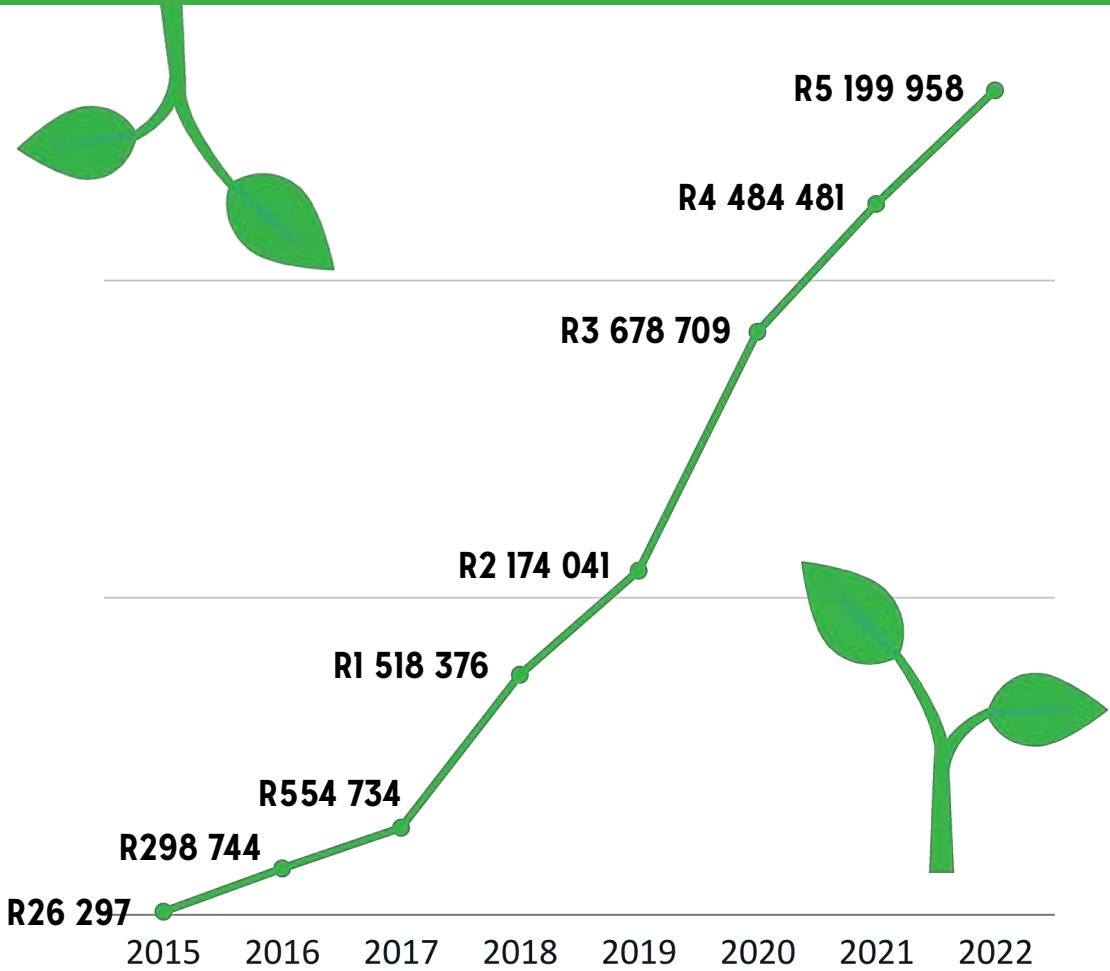
GUIDING YOUNG MEN

The much-loved overnight Boys Programme had an impressive **92%** attendance rate at their **15 sessions**





ORGANIC FARMING PRODUCTION (2015-2022)





At Thanda, we are passionate about the environment. Teaching children to love and respect nature is woven into our lessons and activities, and many of our activities utilise recycled materials like bottle tops for counting and sorting.

PARTNER WITH US

Thanda is a registered Non-profit organisation (085-981-NPO) and Public Benefit Organisation (930031027). We currently have over 30 partners working toward building a stronger community in Mtwalume. We know that creating a sustainable rise above poverty is not a simple task and depends on a chain link of numerous factors. Across all programmes, our holistic approach puts these cumulative factors into play by creating opportunities for growth and resilience that can be built at every stage of life and maintained for generations to come.

Our programmes have grown since Covid. In 2023 and beyond, we are looking to expand our partner base to ensure we maintain the resources required to provide holistic community support for the rural community of Mtwalume.

WE PROVIDE OUR PARTNERS WITH:

▶ Thanda's B-BBEE certificate, Audited Financial Statements and other registration documents as required

▶ Section 18A Receipt

▶ SED Letter

▶ Grant Reporting

▶ Employee Engagement Days

▶ Frequent Communications and updates about the project being funded and the community in general



THANDA

WWW.THANDA.ORG



FOLLOW

GIVE

CONNECT