

THANDA 2016 IMPACT

Early Childhood
Development



19 Enrolled

After-school
Programme



623 Enrolled

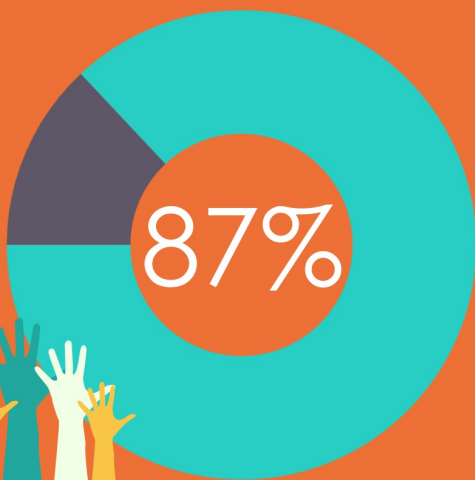
Organic Farming
Programme



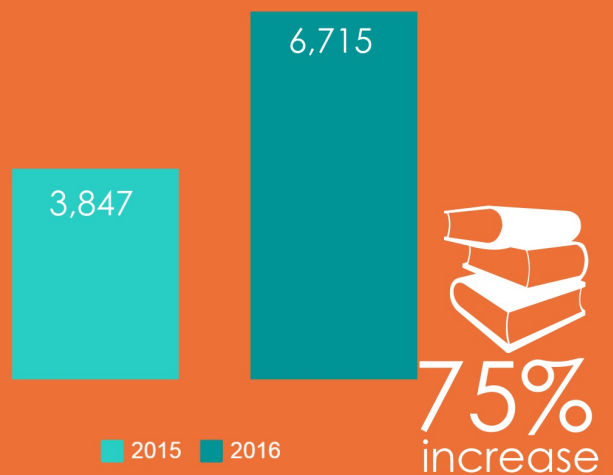
175 Enrolled

After-school numbers

Average After-school
attendance



Books borrowed from our library



Children improved...



186%
Literacy



85%
Numeracy



104%
Critical-thinking



126%
Science



39%
Self-esteem



114%
Empathy

Community Centre Stats



73,347 Meals served

131

Chess sessions



4,671

Children attended during holidays & weekends

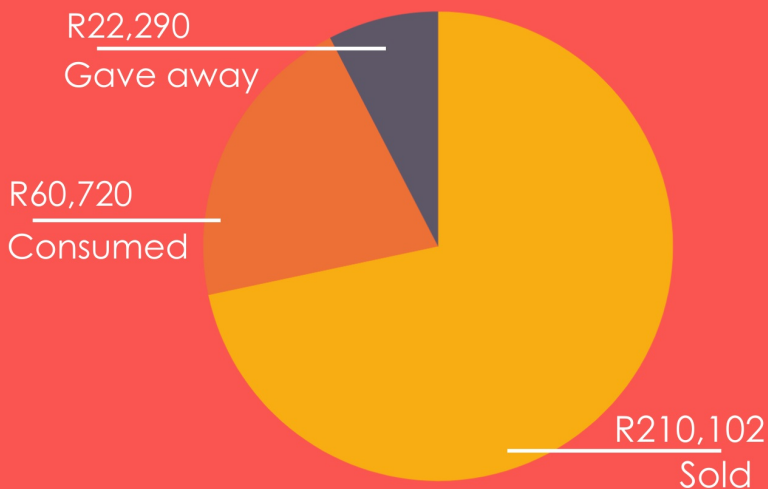


5,957

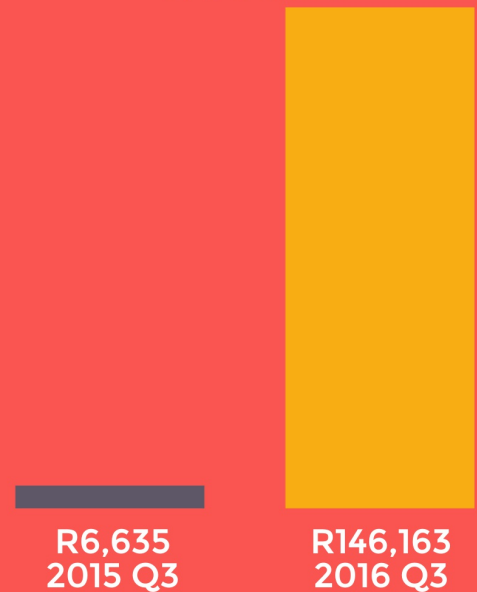
People engaged in community outreach

Organic Farming Achievements

2016 Production Value
Total: R293,113



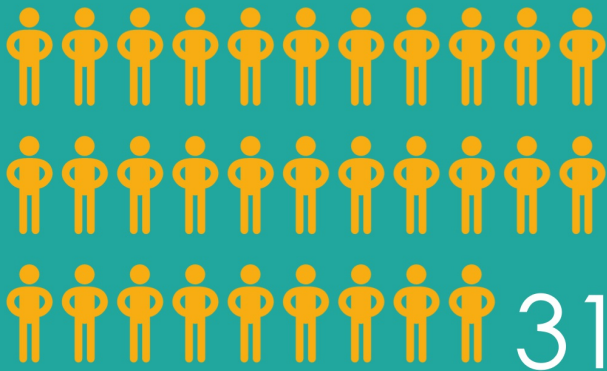
94% Increase in
Q3 sales



“ I am very proud to work in the garden, as it is a way for me to show youth that they can create jobs themselves. ”



Patience,
Thanda Farmer



3 more farms



Farmer Livelihood Improvements

	Baseline - (Q3 2015)	2016
■ Livelihoods (Earning > R500 per month)	0	2
■ Early Livelihoods (Earning R200-R500 per month)	0	14
■ Subsistence (Earning <R200 per month)	56	157
■ Survivalist (Earning < R0 per month)	88	2
Total	144	175



98% decrease in Survivalist

2017 Goals

- Build an Early Childhood Development Centre
- Increase enrollment to 60 children
- Facilitate workshops with ECD parents
- Reach 90% attendance rates



Expand After-school to support over 700 children ●

Double library lending rates ●

Increase community outreach ●

Provide curriculum training for NGOs ●

- Add 40 farmers to Organic Farming Programme
- Increase production values
- Expand to 4 new farms



EMPOWERING PEOPLE TO
CREATE POSITIVE CHANGE

W: www.thanda.org

P: +27 (039) 699-1253

E: info@thanda.org

KwaZulu-Natal

South Africa